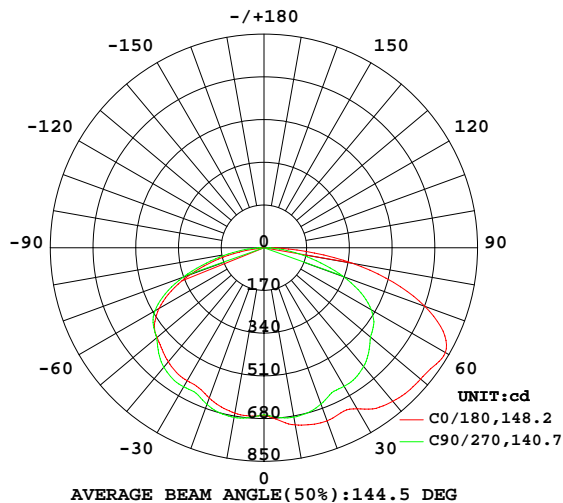


## LUMINAIRE PHOTOMETRIC TEST REPORT

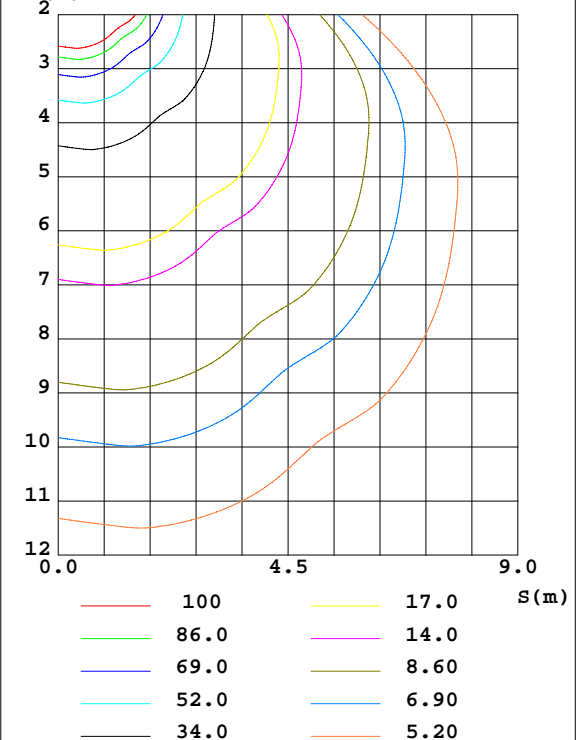
Test:U:229.70V I:0.1769A P:39.492W PF:0.9717 Freq:49.99Hz Lamp Flux:2928.03x1 lm		
NAME:	TYPE:	WEIGHT:
SPEC.:	DIM.: 600*203*10	SERIAL No.:
MFR.:	SUR.:0.58*0.122	Shielding Angle:

DATA OF LAMP		PHOTOMETRIC DATA Eff: 74.14 lm/W			
MODEL		Imax(cd)	834.6	S/MH(C0/180)	1.41
NOMINAL POWER(W)	40	LOR(%)	100.0	S/MH(C90/270)	1.47
RATED VOLTAGE(V)	230.0	TOTAL FLUX(lm)	2928.0	$\eta$ UP,DN(C0-180)	0.0,56.4
NOMINAL FLUX(lm)	2928.03	CIE CLASS	DIRECT	$\eta$ UP,DN(C180-360)	0.0,43.6
LAMPS INSIDE	1	$\eta$ up(%)	0.0	CIBSE SHR NOM	1.50
TEST VOLTAGE(V)	230.0	$\eta$ down(%)	100.0	CIBSE SHR MAX	1.55

LUMINOUS INTENSITY DISTRIBUTION DIAGRAM



C0 PLANE ISOLUX DIAGRAM (UNIT:lx)



C Range: 0 - 360DEG  
C Interval: 90.0DEG  
Test Speed: HIGH  
Temperature:25.3DEG  
Operators:  
Test Date:2026-01-17

$\gamma$  Range: 0 - 90DEG  
 $\gamma$  Interval: 1.0DEG  
Test System:EVERFINE GO-2000A\_V1 SYSTEM V2.0.406.10  
Humidity:65.0%  
Test Distance:11.700m [K=1.0000]  
Remarks:

## ZONAL FLUX DIAGRAM

## ZONAL FLUX DIAGRAM:

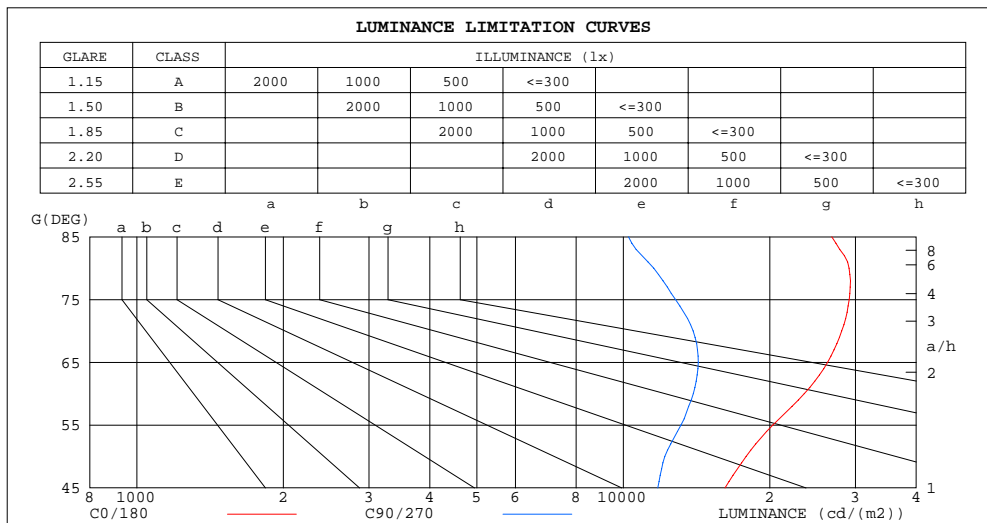
$\gamma$	C0	C90	C180	C270					$\gamma$	$\Phi$ zone	$\Phi$ total	$\Phi$ lum, lamp
10	715.5	684.6	668.2	685.5					0- 10	65.18	65.18	2.23,2.23
20	733.3	662.3	636.5	663.3					10- 20	193.7	258.9	8.84,8.84
30	740.1	636.8	611.1	638.9					20- 30	304.6	563.5	19.2,19.2
40	797.6	616.8	592.6	620.2					30- 40	415.3	978.8	33.4,33.4
50	813.3	553.3	555.5	557.9					40- 50	495.3	1474	50.3,50.3
60	833.2	492.7	481.6	500.8					50- 60	541.3	2015	68.8,68.8
70	680.5	336.7	311.7	342.5					60- 70	503.0	2518	86,86
80	357.7	142.0	99.83	145.2					70- 80	320.0	2838	96.9,96.9
90	30.63	10.62	4.588	11.30					80- 90	89.63	2928	100,100
100									90-100			
110									100-110			
120									110-120			
130									120-130			
140									130-140			
150									140-150			
160									150-160			
170									160-170			
180									170-180			
DEG	LUMINOUS INTENSITY:cd									UNIT:lm		

C Range: 0 - 360DEG  
C Interval: 90.0DEG  
Test Speed: HIGH  
Temperature:25.3DEG  
Operators:  
Test Date:2026-01-17

$\gamma$  Range: 0 - 90DEG  
 $\gamma$  Interval: 1.0DEG  
Test System:EVERFINE GO-2000A\_V1 SYSTEM V2.0.406.10  
Humidity:65.0%  
Test Distance:11.700m [K=1.0000]  
Remarks:

## LUMINANCE LIMITATION CURVES

Test:U:229.70V I:0.1769A P:39.492W PF:0.9717 Freq:49.99Hz Lamp Flux:2928.03x1 lm		
NAME:	TYPE:	WEIGHT:
SPEC.:	DIM.: 600*203*10	SERIAL No.:
MFR.:	SUR.:0.58*0.122	Shielding Angle:



LUMINANCE cd/(m2)		
G(DEG)	C0/180	C90/270
85	26824	10245
80	29115	11553
75	29132	12804
70	28120	13913
65	26296	14252
60	23549	13925
55	20288	13138
50	17881	12166
45	16176	11775

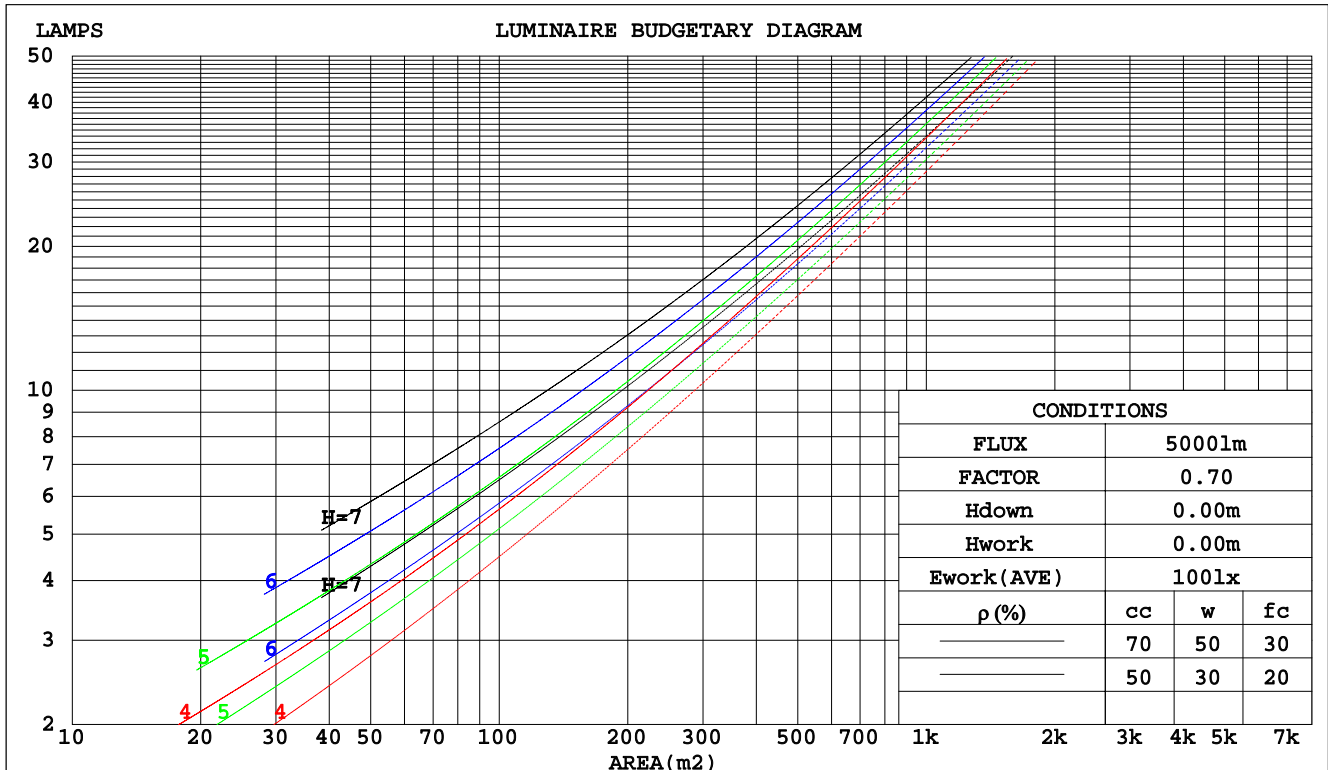
C Range: 0 - 360DEG  
C Interval: 90.0DEG  
Test Speed: HIGH  
Temperature:25.3DEG  
Operators:  
Test Date:2026-01-17

$\gamma$  Range: 0 - 90DEG  
 $\gamma$  Interval: 1.0DEG  
Test System:EVERFINE GO-2000A\_V1 SYSTEM V2.0.406.10  
Humidity:65.0%  
Test Distance:11.700m [K=1.0000]  
Remarks:

## CU AND LUMINAIRE BUDGETARY ESTIMATE DIAGRAM

Test:U:229.70V I:0.1769A P:39.492W PF:0.9717 Freq:49.99Hz Lamp Flux:2928.03x1 lm		
NAME:	TYPE:	WEIGHT:
SPEC.:	DIM.: 600*203*10	SERIAL No.:
MFR.:	SUR.:0.58*0.122	Shielding Angle:

pcc	80%			70%			50%			30%			10%			0
pw	50%	30%	10%	50%	30%	10%	50%	30%	10%	50%	30%	10%	50%	30%	10%	0
pfc	20%			20%			20%			20%			20%			0
RCR	RCR:Room Cavity Ratio			Coefficients of Utilization(CU)												
0.0	1.19	1.19	1.19	1.16	1.16	1.16	1.11	1.11	1.11	1.06	1.06	1.06	1.02	1.02	1.02	.00
1.0	1.01	.96	.92	.99	.94	.90	.95	.91	.87	.91	.87	.85	.87	.84	.82	.80
2.0	.86	.78	.72	.84	.77	.71	.81	.74	.69	.77	.72	.67	.74	.70	.66	.64
3.0	.74	.65	.58	.72	.64	.57	.69	.62	.56	.67	.60	.55	.64	.58	.54	.51
4.0	.65	.55	.47	.63	.54	.47	.61	.53	.46	.58	.51	.46	.56	.50	.45	.42
5.0	.57	.47	.40	.56	.46	.39	.54	.45	.39	.51	.44	.39	.50	.43	.38	.36
6.0	.51	.41	.34	.50	.40	.34	.48	.40	.33	.46	.39	.33	.44	.38	.33	.30
7.0	.46	.36	.29	.45	.36	.29	.43	.35	.29	.42	.34	.29	.40	.34	.29	.26
8.0	.41	.32	.26	.41	.32	.26	.39	.31	.26	.38	.31	.25	.37	.30	.25	.23
9.0	.38	.29	.23	.37	.29	.23	.36	.28	.23	.35	.28	.23	.34	.27	.22	.20
10.0	.35	.26	.21	.34	.26	.21	.33	.26	.20	.32	.25	.20	.31	.25	.20	.18



C Range: 0 - 360DEG  
C Interval: 90.0DEG  
Test Speed: HIGH  
Temperature:25.3DEG  
Operators:  
Test Date:2026-01-17

γ Range: 0 - 90DEG  
γ Interval: 1.0DEG  
Test System:EVERFINE GO-2000A\_V1 SYSTEM V2.0.406.10  
Humidity:65.0%  
Test Distance:11.700m [K=1.0000]  
Remarks:

## WEC AND CCEC

Test:U:229.70V I:0.1769A P:39.492W PF:0.9717 Freq:49.99Hz Lamp Flux:2928.03x1 lm								
NAME:			TYPE:			WEIGHT:		
SPEC.:			DIM.: 600*203*10			SERIAL No.:		
MFR.:			SUR.:0.58*0.122			Shielding Angle:		

pcc	80%			70%			50%			30%			10%			0
pw	50%	30%	10%	50%	30%	10%	50%	30%	10%	50%	30%	10%	50%	30%	10%	0
pfc	20%			20%			20%			20%			20%			0
RCR	RCR:Room Cavity Ratio						Wall Exitance Coefficients(WEC)									
0.0																
1.0	.360	.205	.065	.353	.201	.064	.339	.195	.062	.327	.188	.060	.315	.183	.059	
2.0	.333	.182	.056	.326	.180	.055	.314	.175	.054	.303	.170	.053	.293	.166	.052	
3.0	.303	.161	.048	.298	.159	.048	.287	.155	.047	.277	.152	.047	.268	.148	.046	
4.0	.276	.144	.042	.271	.142	.042	.262	.139	.041	.253	.136	.041	.245	.133	.040	
5.0	.253	.129	.037	.248	.127	.037	.240	.125	.037	.232	.122	.036	.224	.120	.036	
6.0	.232	.116	.033	.228	.115	.033	.221	.113	.033	.213	.111	.033	.207	.109	.032	
7.0	.214	.106	.030	.211	.105	.030	.204	.103	.030	.198	.101	.029	.192	.100	.029	
8.0	.199	.097	.027	.196	.096	.027	.190	.095	.027	.184	.093	.027	.179	.092	.027	
9.0	.185	.090	.025	.182	.089	.025	.177	.087	.025	.172	.086	.025	.167	.085	.025	
10.0	.173	.083	.023	.171	.082	.023	.166	.081	.023	.161	.080	.023	.157	.079	.023	

pcc	80%			70%			50%			30%			10%			0
pw	50%	30%	10%	50%	30%	10%	50%	30%	10%	50%	30%	10%	50%	30%	10%	0
pfc	20%			20%			20%			20%			20%			0
RCR	RCR:Room Cavity Ratio						Ceiling Cavity Exitance Coefficients(CCEC)									
0.0	.190	.190	.190	.163	.163	.163	.111	.111	.111	.064	.064	.064	.020	.020	.020	
1.0	.184	.156	.130	.157	.134	.112	.108	.092	.078	.062	.053	.045	.020	.017	.015	
2.0	.178	.132	.093	.152	.113	.080	.104	.078	.056	.060	.046	.033	.019	.015	.011	
3.0	.171	.115	.070	.147	.099	.060	.101	.069	.042	.058	.040	.025	.019	.013	.008	
4.0	.164	.102	.054	.140	.088	.047	.097	.061	.033	.056	.036	.020	.018	.012	.006	
5.0	.156	.091	.044	.134	.079	.038	.092	.055	.027	.053	.032	.016	.017	.011	.005	
6.0	.149	.083	.036	.128	.072	.032	.088	.050	.022	.051	.030	.013	.016	.010	.004	
7.0	.141	.076	.031	.122	.066	.027	.084	.046	.019	.049	.027	.011	.016	.009	.004	
8.0	.134	.071	.027	.116	.061	.024	.080	.043	.017	.047	.025	.010	.015	.008	.003	
9.0	.128	.066	.024	.110	.057	.021	.076	.040	.015	.044	.024	.009	.014	.008	.003	
10.0	.122	.061	.021	.105	.053	.019	.073	.038	.013	.042	.022	.008	.014	.007	.003	

C Range: 0 - 360DEG  
C Interval: 90.0DEG  
Test Speed: HIGH  
Temperature:25.3DEG  
Operators:  
Test Date:2026-01-17

γ Range: 0 - 90DEG  
γ Interval: 1.0DEG  
Test System:EVERFINE GO-2000A\_V1 SYSTEM V2.0.406.10  
Humidity:65.0%  
Test Distance:11.700m [K=1.0000]  
Remarks:

UGR(Unified Glare Rating) Table

Test:U:229.70V I:0.1769A P:39.492W PF:0.9717 Freq:49.99Hz Lamp Flux:2928.03x1 lm											
NAME:			TYPE:			WEIGHT:					
SPEC.:			DIM.: 600*203*10			SERIAL No.:					
MFR.:			SUR.:0.58*0.122			Shielding Angle:					
ceiling/cavity	0.7	0.7	0.5	0.5	0.3	0.7	0.7	0.5	0.5	0.3	
walls	0.5	0.3	0.5	0.3	0.3	0.5	0.3	0.5	0.3	0.3	
working plane	0.2	0.2	0.2	0.2	0.2	0.2	0.2	0.2	0.2	0.2	
Room dimensions		Viewed crosswise				Viewed endwise					
x = 2H y = 2H	2H	24.7	26.4	25.0	26.6	26.8	22.7	24.4	23.0	24.6	24.8
	3H	27.4	29.0	27.8	29.2	29.5	24.7	26.2	25.0	26.5	26.7
	4H	28.6	30.1	28.9	30.3	30.6	25.4	26.9	25.7	27.1	27.4
	6H	29.5	30.9	29.8	31.2	31.5	25.9	27.3	26.2	27.6	27.9
	8H	29.8	31.2	30.2	31.5	31.8	26.0	27.4	26.4	27.7	28.0
	12H	30.0	31.3	30.4	31.7	32.0	26.1	27.4	26.5	27.7	28.0
4H	2H	25.4	26.9	25.7	27.1	27.4	24.0	25.5	24.3	25.7	26.0
	3H	28.2	29.6	28.6	29.9	30.2	26.1	27.4	26.4	27.7	28.0
	4H	29.5	30.7	29.9	31.1	31.4	26.9	28.1	27.3	28.4	28.8
	6H	30.6	31.7	31.0	32.0	32.4	27.5	28.6	27.9	28.9	29.3
	8H	31.0	32.0	31.4	32.4	32.7	27.7	28.7	28.1	29.1	29.5
	12H	31.3	32.2	31.7	32.6	33.0	27.8	28.8	28.3	29.1	29.6
8H	4H	29.8	30.8	30.2	31.2	31.6	27.6	28.6	28.0	29.0	29.4
	6H	31.0	31.9	31.5	32.3	32.7	28.4	29.2	28.8	29.6	30.1
	8H	31.5	32.3	32.0	32.7	33.1	28.7	29.4	29.1	29.8	30.3
	12H	31.9	32.6	32.4	33.0	33.5	28.9	29.5	29.4	30.0	30.5
12H	4H	29.8	30.7	30.2	31.1	31.5	27.7	28.6	28.1	29.0	29.4
	6H	31.1	31.8	31.5	32.2	32.7	28.6	29.3	29.0	29.7	30.2
	8H	31.6	32.3	32.1	32.7	33.2	28.9	29.6	29.4	30.0	30.5
Variations with the observer position at spacings:											
S = 1.0H	+ 0.1 / - 0.1					+ 0.1 / - 0.2					
1.5H	+ 0.1 / - 0.1					+ 0.2 / - 0.3					
2.0H	+ 0.2 / - 0.3					+ 0.3 / - 0.6					

CIE Pub.117, 2928 lm Total Lamp Luminous Flux Corrected ( $8\log(F/F_0) = 3.7$ )

C Range: 0 - 360DEG  
 C Interval: 90.0DEG  
 Test Speed: HIGH  
 Temperature:25.3DEG  
 Operators:  
 Test Date:2026-01-17

γ Range: 0 - 90DEG  
 γ Interval: 1.0DEG  
 Test System:EVERFINE GO-2000A\_V1 SYSTEM V2.0.406.10  
 Humidity:65.0%  
 Test Distance:11.700m [K=1.0000]  
 Remarks:

## UTILIZATION FACTORS TABLE

Test:U:229.70V I:0.1769A P:39.492W PF:0.9717 Freq:49.99Hz Lamp Flux:2928.03x1 lm		
NAME:	TYPE:	WEIGHT:
SPEC.:	DIM.: 600*203*10	SERIAL No.:
MFR.:	SUR.:0.58*0.122	Shielding Angle:

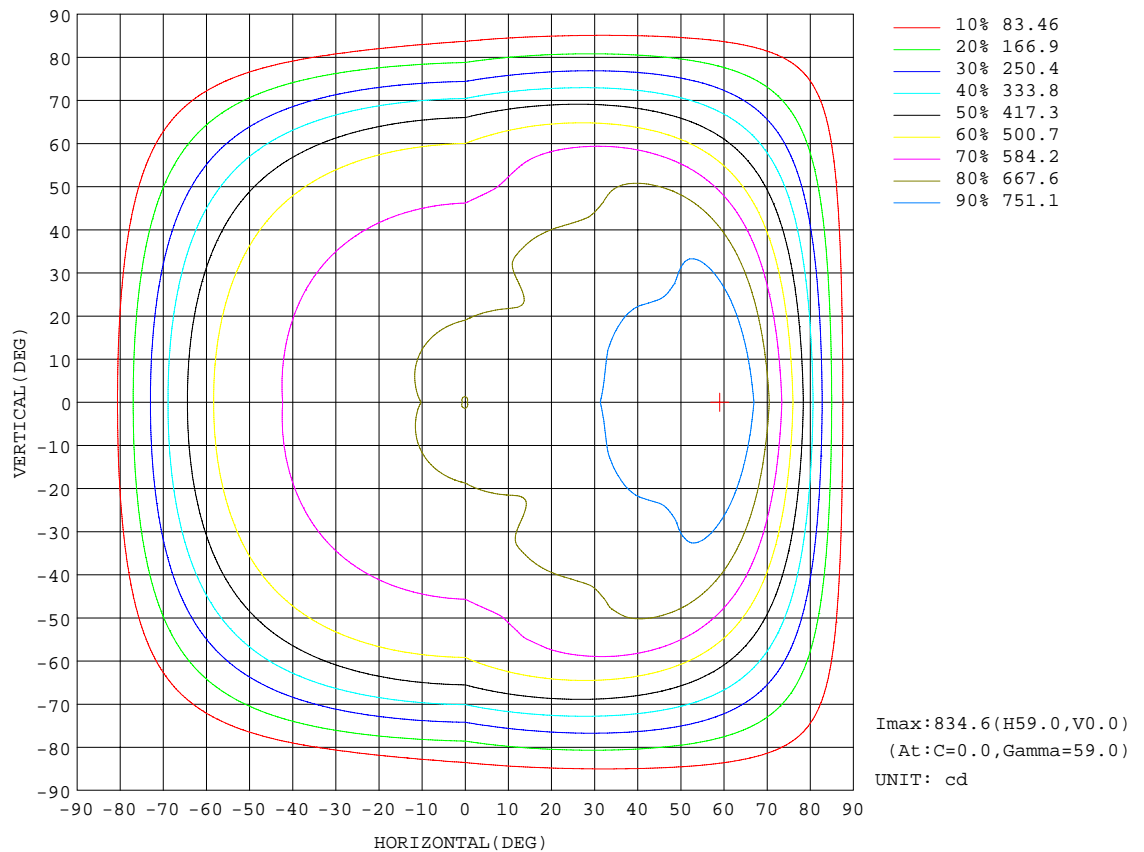
REFLECTANCE										
Ceiling	0.8	0.8	0.8	0.7	0.7	0.7	0.5	0.5	0.5	0
Walls	0.7	0.5	0.3	0.7	0.5	0.3	0.7	0.5	0.3	0
Working plane	0.2	0.2	0.2	0.2	0.2	0.2	0.2	0.2	0.2	0
ROOM INDEX	UTILIZATION FACTORS(PERCENT) $k(RI) \times RCR = 5$									
$k = 0.60$	51	39	31	51	38	31	49	38	31	24
0.80	61	48	40	60	48	40	58	47	39	32
1.00	70	57	49	68	57	49	66	58	48	40
1.25	77	65	57	76	64	57	73	63	56	48
1.50	83	71	63	81	70	63	78	68	62	53
2.00	90	80	73	89	79	72	85	77	71	62
2.50	95	86	79	93	85	78	89	82	76	67
3.00	99	91	85	97	89	83	92	86	81	72
4.00	104	97	92	101	95	90	97	92	88	78
5.00	107	101	96	104	99	95	99	95	92	82
ROOM INDEX	UF(total)									Direct
According to DIN EN 13032-2 2004			Suspended					SHRNOM = 1.25		

C Range: 0 - 360DEG  
C Interval: 90.0DEG  
Test Speed: HIGH  
Temperature:25.3DEG  
Operators:  
Test Date:2026-01-17

$\gamma$  Range: 0 - 90DEG  
 $\gamma$  Interval: 1.0DEG  
Test System:EVERFINE GO-2000A\_V1 SYSTEM V2.0.406.10  
Humidity:65.0%  
Test Distance:11.700m [K=1.0000]  
Remarks:

## ISOCANDELA DIAGRAM

Test:U:229.70V I:0.1769A P:39.492W PF:0.9717 Freq:49.99Hz Lamp Flux:2928.03x1 lm		
NAME:	TYPE:	WEIGHT:
SPEC.:	DIM.: 600*203*10	SERIAL No.:
MFR.:	SUR.:0.58*0.122	Shielding Angle:



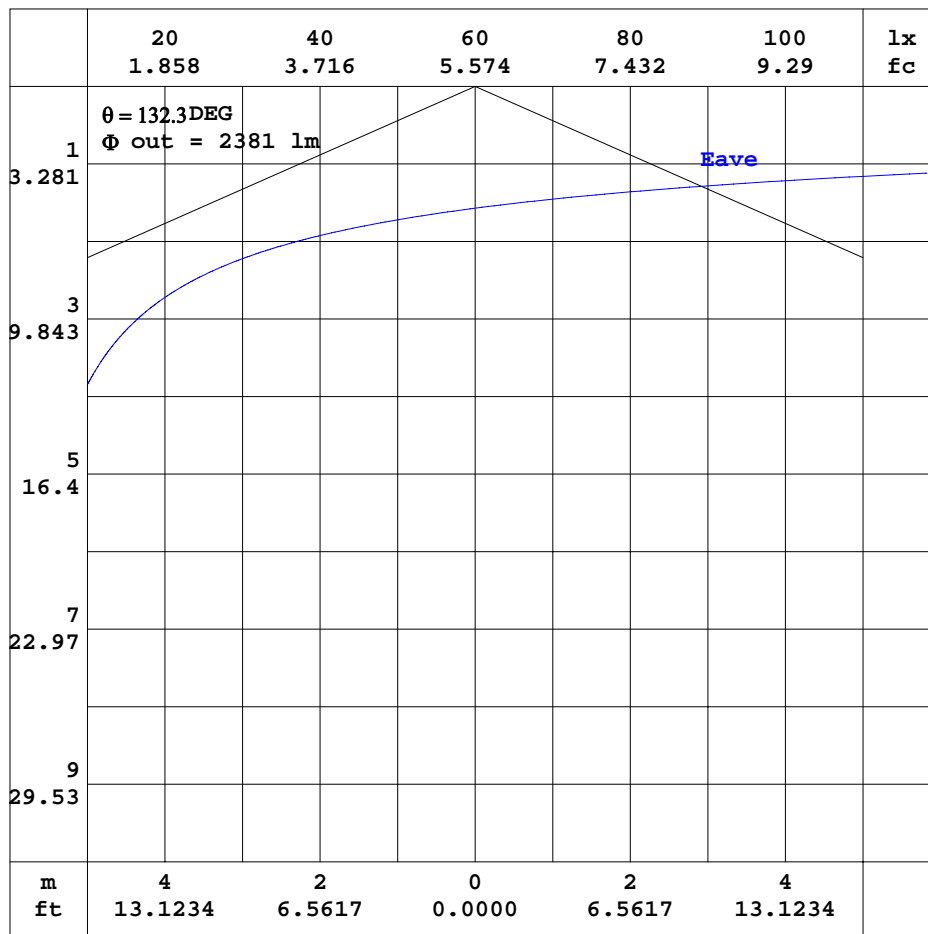
C Range: 0 - 360DEG  
C Interval: 90.0DEG  
Test Speed: HIGH  
Temperature:25.3DEG  
Operators:  
Test Date:2026-01-17

$\gamma$  Range: 0 - 90DEG  
 $\gamma$  Interval: 1.0DEG  
Test System:EVERFINE GO-2000A\_V1 SYSTEM V2.0.406.10  
Humidity:65.0%  
Test Distance:11.700m [K=1.0000]  
Remarks:



### AAI CURVES

Test:U:229.70V I:0.1769A P:39.492W PF:0.9717 Freq:49.99Hz Lamp Flux:2928.03x1 lm		
NAME:	TYPE:	WEIGHT:
SPEC.:	DIM.: 600*203*10	SERIAL No.:
MFR.:	SUR.:0.58*0.122	Shielding Angle:



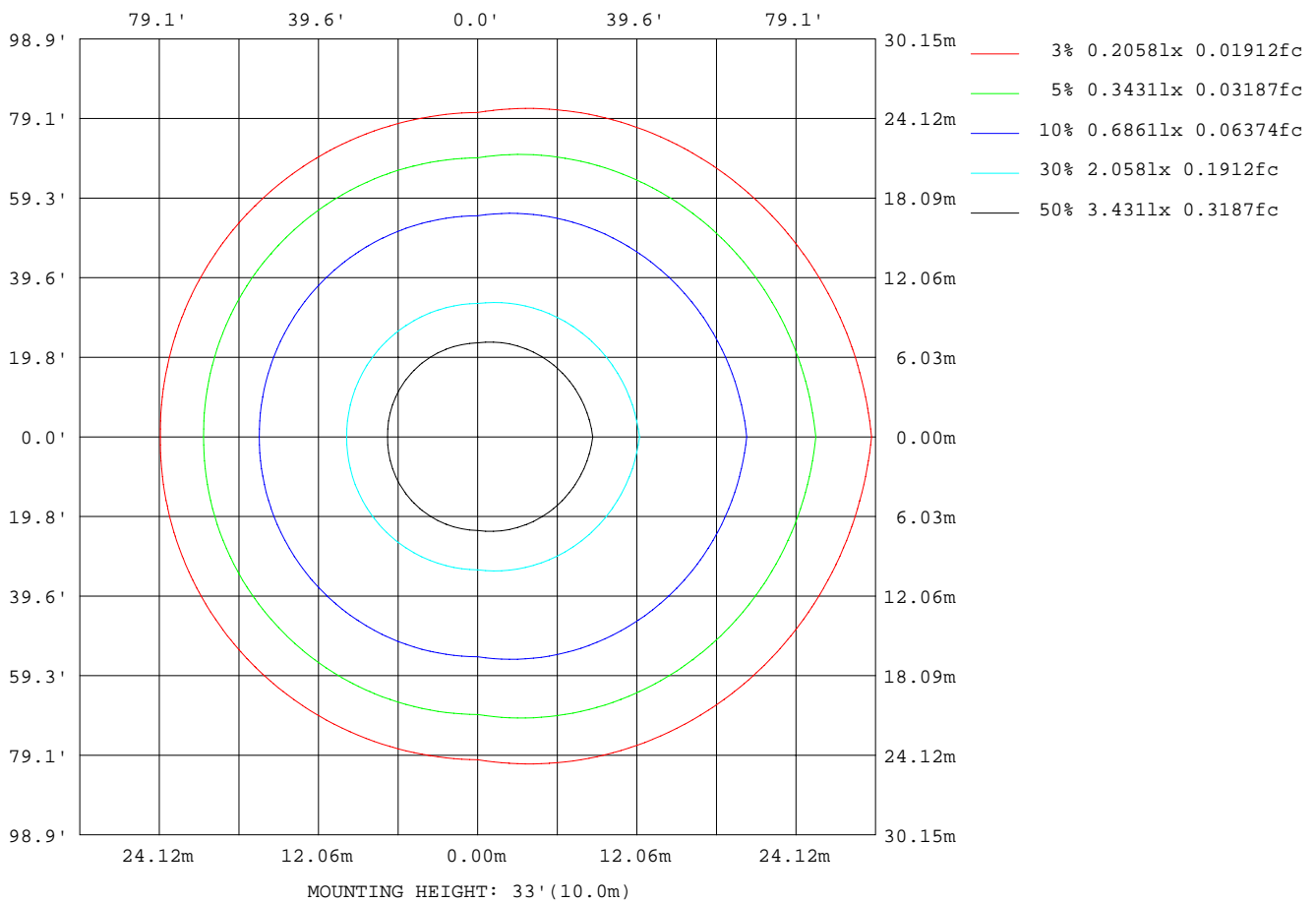
Note:The Curves indicate the illuminated area and the average illumination when the luminaire is at different distance.

C Range: 0 - 360DEG  
C Interval: 90.0DEG  
Test Speed: HIGH  
Temperature:25.3DEG  
Operators:  
Test Date:2026-01-17

γ Range: 0 - 90DEG  
γ Interval: 1.0DEG  
Test System:EVERFINE GO-2000A\_V1 SYSTEM V2.0.406.10  
Humidity:65.0%  
Test Distance:11.700m [K=1.0000]  
Remarks:

## ISOLUX DIAGRAM

Test:U:229.70V I:0.1769A P:39.492W PF:0.9717 Freq:49.99Hz Lamp Flux:2928.03x1 lm		
NAME:	TYPE:	WEIGHT:
SPEC.:	DIM.: 600*203*10	SERIAL No.:
MFR.:	SUR.:0.58*0.122	Shielding Angle:



C Range: 0 - 360DEG  
C Interval: 90.0DEG  
Test Speed: HIGH  
Temperature: 25.3DEG  
Operators:  
Test Date: 2026-01-17

$\gamma$  Range: 0 - 90DEG  
 $\gamma$  Interval: 1.0DEG  
Test System: EVERFINE GO-2000A\_V1 SYSTEM V2.0.406.10  
Humidity: 65.0%  
Test Distance: 11.700m [K=1.0000]  
Remarks:

## LED Avg.L Report

Test:U:229.70V I:0.1769A P:39.492W PF:0.9717 Freq:49.99Hz Lamp Flux:2928.03x1 lm		
NAME:	TYPE:	WEIGHT:
SPEC.:	DIM.: 600*203*10	SERIAL No.:
MFR.:	SUR.:0.58*0.122	Shielding Angle:

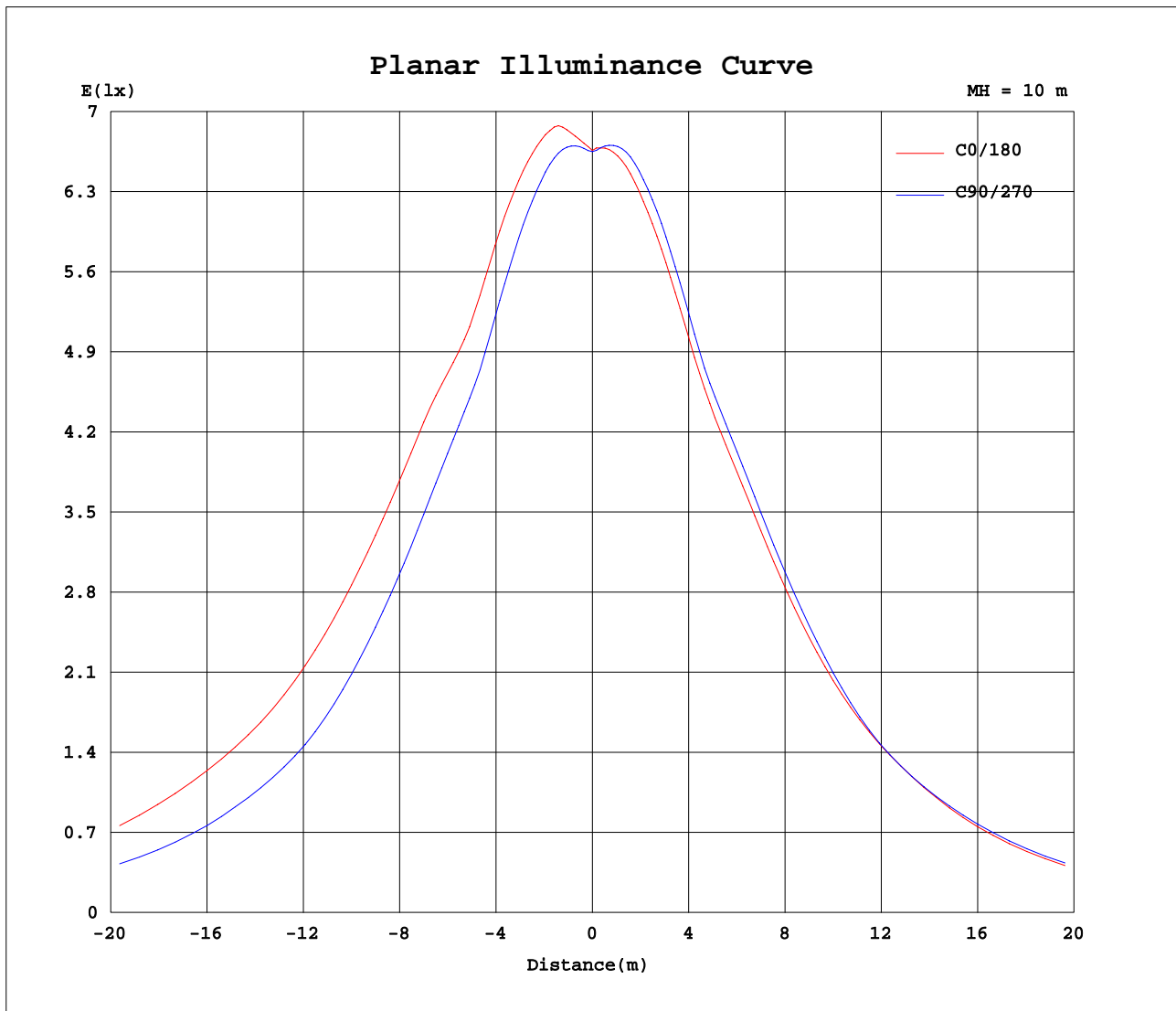
AvgL	cd/m2
L_0~180(65)av	19957
L_0~180(75)av	20240
L_0~180(85)av	13758
L_90~270(65)av	14381
L_90~270(75)av	12894
L_90~270(85)av	10337
L_45(65)av	16076
L_45(75)av	15093
L_45(85)av	10804

Standard: GB/T 29293-2012

C Range: 0 - 360DEG  
C Interval: 90.0DEG  
Test Speed: HIGH  
Temperature:25.3DEG  
Operators:  
Test Date:2026-01-17

γ Range: 0 - 90DEG  
γ Interval: 1.0DEG  
Test System:EVERFINE GO-2000A\_V1 SYSTEM V2.0.406.10  
Humidity:65.0%  
Test Distance:11.700m [K=1.0000]  
Remarks:

## Planar Illuminance Curve



C Range: 0 - 360DEG  
C Interval: 90.0DEG  
Test Speed: HIGH  
Temperature: 25.3DEG  
Operators:  
Test Date: 2026-01-17

$\gamma$  Range: 0 - 90DEG  
 $\gamma$  Interval: 1.0DEG  
Test System: EVERFINE GO-2000A\_V1 SYSTEM V2.0.406.10  
Humidity: 65.0%  
Test Distance: 11.700m [K=1.0000]  
Remarks:

```

γ Range: 0 - 90DEG
γ Interval: 1.0DEG
Test System:EVERFINE GO-2000A_V1 SYSTEM V2.0.406.10
Humidity:65.0%
Test Distance:11.700m [K=1.0000]
Remarks:

```